



EBS-230 SERIES

Low Cost Self Contained Ink Jet Printers

compact - economical - reliable

Martek Industries EBS-230 series ink jet printers allow all surfaces to be printed at an affordable price.

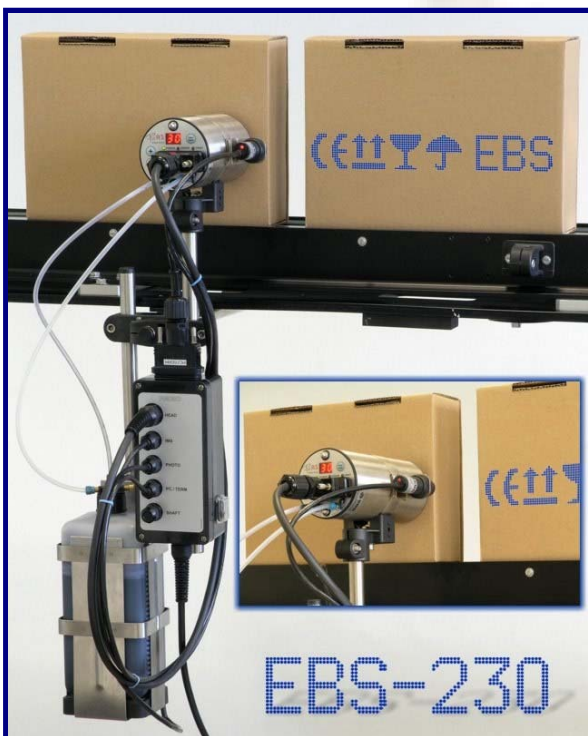
Cardboard - plastic - metal - glass - film - textiles ...

The EBS-230 has been designed to print 6 to 27mm high characters onto all surfaces porous and non-porous. The compact, self-contained design keeps cost to a minimum without compromising reliability.

- 7-dot and 16-dot versions
- Wireless connection to PC for programming
- Optional graphical Miniterminal for local control
- No compressed air required for porous surfaces
- Compact design easy to install in confined space
- 30 message on-board storage
- Built-in clock for time, date & counter printing
- Multiple printers may be controlled from 1 PC or Miniterminal
- Low ink consumption



EBS-230 with M200 Miniterminal



EBS-230 stand-alone system



control options

T200 Miniterminal

For applications where message content is frequently changing or where operator input is required (e.g. batch code printing), the T200 Miniterminal provides the ideal solution.

The graphical touch screen is housed in an industrial stainless steel case and allows operators to:

- edit print messages
- change print settings e.g. delay, dot size and print width
- send message libraries to the printer
- control print function e.g. printer online / offline

The T200 may be left connected to the printer or removed allowing the printer to operate independently. One T200 can be used with multiple printers.

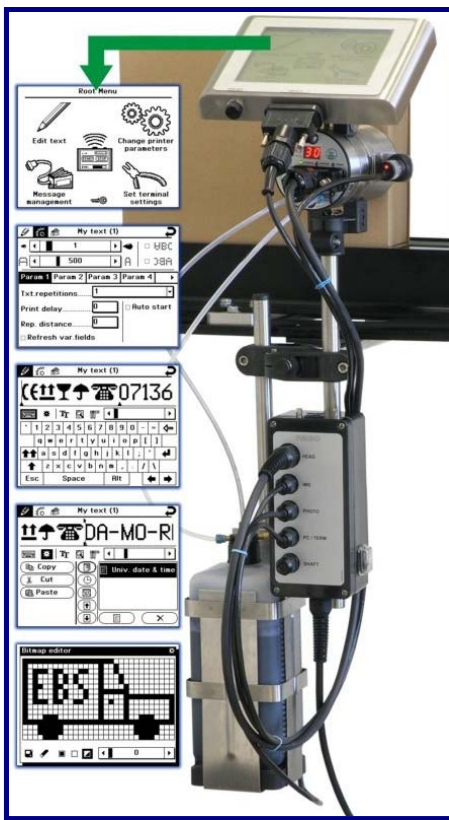
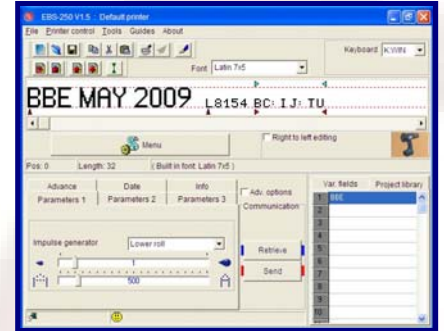
PC Control

Windows™ message editor and printer control software is included with every EBS-230.

This allows messages to be created and formatted and transmitted to the EBS-230 system by wireless LAN or serial connection.

One PC can control multiple printers.

EBS-250 handheld ink jet printers may also be controlled from the same software.



SPECIFICATIONS

Print characteristics

Print nozzles:	7 and 16 nozzle models
Nozzle diameter:	150 micron standard – 100, 120 and 200 micron optional
Print height:	6 to 12mm (7 nozzle printer) – 6 to 27mm (16 nozzle printer)
Print direction:	Any direction
Message storage:	30 messages
Characters per message:	Up to 1,300 depending on font
Graphics:	Graphics editor included with Windows software
Special print fields:	Date, time, offset date and counters in many formats
Print speed:	Up to 60m/min using standard fonts and print characteristics
Ink types:	Water, ethanol and acetone based (acetone required compressed air to pressurise)
Ink colours:	Various depending on type including black, red, blue and green
Ink container size:	1 litre
Ink consumption:	Typically over 2,000,000 7x5 dot characters per litre

Environment

Operating temperature:	+5 to +40°C
Storage temperature:	-10 to +45°C
Humidity:	Up to 95% non condensing

Physical characteristics

Printhead dimensions:	70mm diameter x 250mm length including connectors
Connection box dimensions:	250 x 80 x 160mm
Printhead weight:	600g
Connection box weight:	1Kg

Services

Electrical supply:	100-240Vac, 50-60Hz, 700W
Compressed air:	Required only for acetone (fast-dry) ink

Options:

T200 Miniterminal:	Graphical controller – 185 x 145 x 36mm, 650g, IP54
--------------------	---

Martek Industries Ltd

12b Ridings Park Industrial Estate – Eastern Way – Cannock – Staffs – WS11 7FJ – UK
Tel: +44 (0)1543 502202 – Fax: +44 (0)1543 467726 – Email: sales@martekonline.co.uk

www.martekonline.co.uk

MARTEK INDUSTRIES